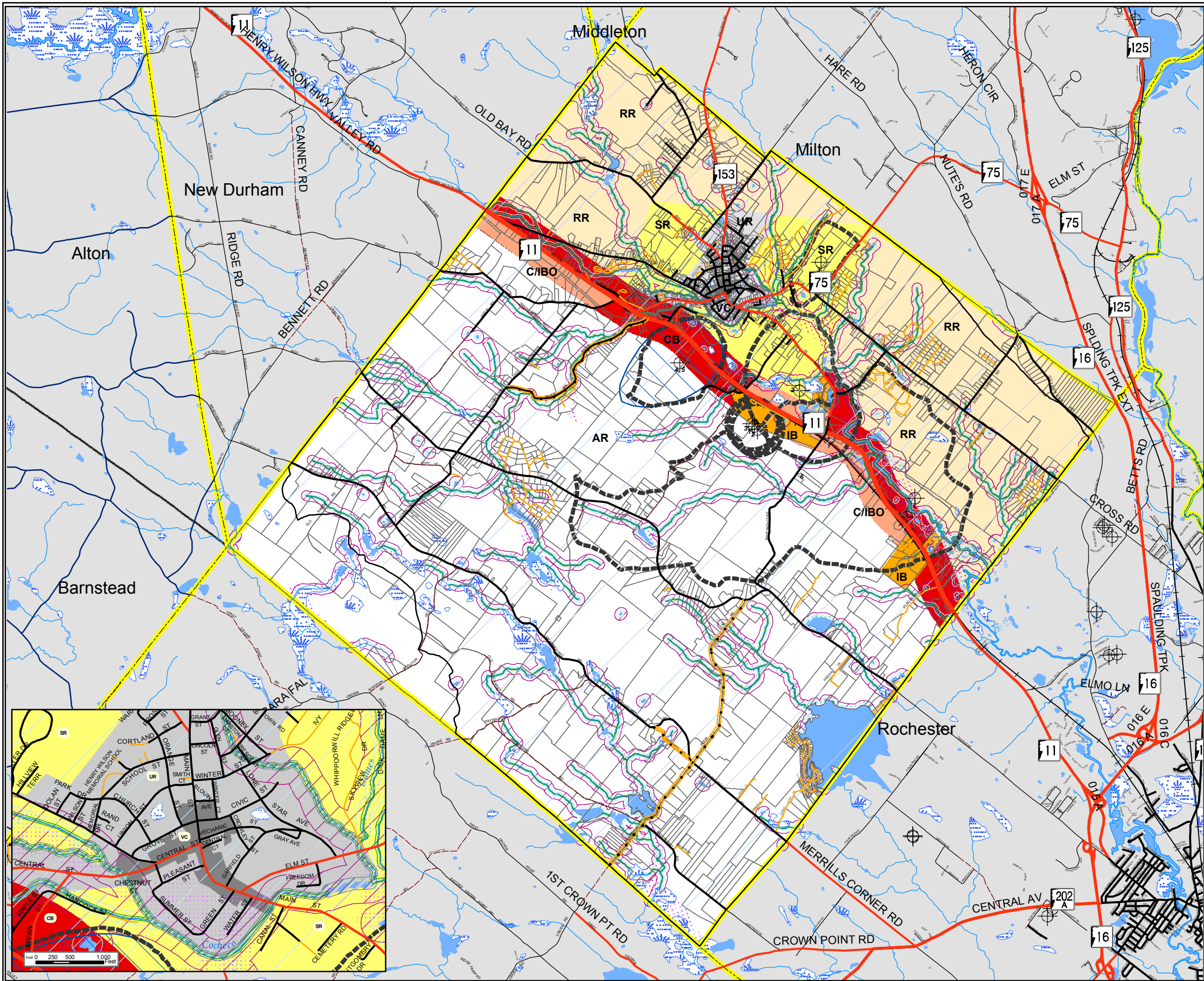


Town of
Farmington
New Hampshire

Zoning Districts
And
Other Protected Areas



Legend

Base Districts

- AR - AGRICULTURAL RESIDENTIAL
- CB - COMMERCIAL BUSINESS
- IB - INDUSTRIAL BUSINESS
- RR - RURAL RESIDENTIAL
- SR - SUBURBAN RESIDENTIAL
- UR - URBAN RESIDENTIAL
- VC - VILLAGE CENTER
- C/IBO - COMMERCIAL/INDUSTRIAL BUSINESS OVERLAY

Overlay Districts

- AQUIFER PROTECTION DISTRICT
- FLOODPLAIN PROTECTION DISTRICT
- WETLANDS OVERLAY DISTRICT ** (See Note)

Waterfront Protection Overlay District

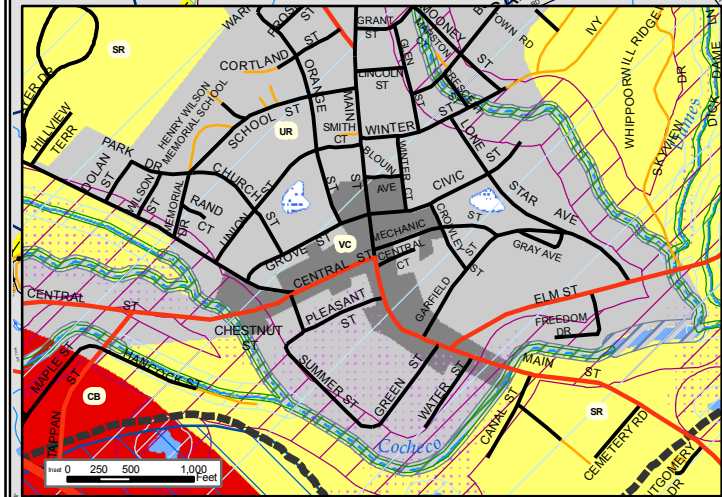
- 50' LIMITED DEVELOPMENT ZONE
- 100' LIMITED DEVELOPMENT ZONE
- 250' CONTROLLED DEVELOPMENT ZONE

Watershed Protection Overlay District

- COCHECO RIVER WATERSHED BOUNDARY ** (See Note)
- 25' VEGETATED BUFFER ADJACENT TO RIVERS AND STREAMS
- 250' BUFFER ADJACENT TO GREAT PONDS AND LAKES * (See Note)

Other Protected Areas

- Scenic Roads
- WELLHEAD LOCATIONS
- WELLHEAD AND GROUNDWATER PROTECTION AREAS



Prepared by **Strafford Regional Planning Commission**
2 Ridge Street, Suite 4, Dover, NH 03820
T: (603) 742-2523 F: (603) 742-7986 em: srpc@straftord.org
Farmington Zoning and Overlay Districts
Date/Author: April 2004 / DEK
Last Modified: Date By: 6 April 2009 / DC
Print Date: 6 April 2009
Path: G:\towns\far\zoning\2008_11x17.mxd

Base Features are from USGS 1:24,000 scale Digital Line Graphs, as archived in the GRANIT database. All base features distributed by Complex Systems Research Center, Durham, NH. Digital Data is not GRANT. It represents the efforts of the contributing agencies to record information from the civil owner materials. Complex Systems Research Center, under contract to the NH Office of State Planning, and in consultation with cooperating agencies, maintains a continuing program to identify and correct errors in Base data. SRPC, SRPC and the cooperating agencies make no claim as to the validity or reliability or to any implied uses of these data.

Some roads and road names have been edited by SRPC. SRPC invites comments from its member communities to further develop existing road and road name features in the road data layer. Some roads outside of the Strafford Regional Planning Region are shown in a single context, as we currently do not have Streeting road data for them. Overlay districts were digitized by SRPC in April 2004 from the most up to date Zoning Ordinance and Master Plan available for the Town of Farmington. The data on this map is for planning purposes only. The precise boundaries locations of these zoning districts shall be taken up with the Town of Farmington.

SMARTMAP and data was provided by the New Hampshire Department of Transportation Bureau of Information Technology Services on Aug. 14, 2002. These road data represent NHDOT Mapping data as of the date above. Please be aware that the data set is still under development and is NOT guaranteed to be complete or totally accurate, but is the best data that we have available on the date.

Wetland and Groundwater Protection Areas were provided from New Hampshire Dept. of Environmental Services Drinking Water Protection Areas data layer. Identification of areas were also provided by the Town of Farmington, NH.

Base Features

- Class I Trunk Line Highway
- Class II State Aid Highway
- Class III Recreational Roads
- Class IV Town or City Streets or Compact Section Highways
- Class V Town Roads or Rural Highways
- Class VI Not Maintained
- Private Roads
- Railroad Tracks

- Surface Water
- Lake, Pond, River
- Wetland
- Apparent Wetland limit
- Brook, stream, etc

Political Boundaries

- SRPC Town Boundaries
- NH Town Boundaries
- ME Town Boundaries

